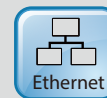
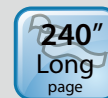




A Fast, and Affordable Scanner



Features:

- Fast, 70 ppm / 140 ipm scanning in color, grayscale and monochrome (300 dpi)
- Auto crop and deskew a document with the advanced Avison-developed image processing unit to enhance the scanning speed
- Support form paper up to 242 x 356 mm (9.5 x 14 in.)
- Daily duty cycle up to 15,000 sheets
- Robust 100-page automatic document feeder (80 g/m², 20 lb.)
- Reverse roller technology delivers outstanding feeding reliability
- Hard and embossed card scanning up to 1.25 mm in thickness in portrait or landscape feeding
- Press and scan to cloud servers via the bundled software Button Manager V2
- Earth-friendly LED technology
- Long page scanning: 5540 mm (218") (<300 dpi, simplex)/ 6096 mm (240") (<200 dpi)

Overview

The AD370WN is a 70 page-per-minute, duplex scanner that is fast, reliable, and affordable for business where scanning plastic ID cards, business cards, documents or other heavy card stock is necessary. Embedded with Avison-developed image processor, the scanned image can be automatically cropped, straightened, and optimized with enhanced speed.

Support form document up to 242 x 356 mm (9.5 x 14 in.)

The AD370WN boasts a unique and innovative design in comparison with its predecessors - the ability to accommodate form document up to 242 x 356 mm (9.5 x 14 in.). The extended document width from standard 216 mm (8.5 in.) to 242 mm (9.5 in.) makes the AD370WN more competitive to fit for a wider range of documents.



Reverse Roller Enhances Feeding Reliability

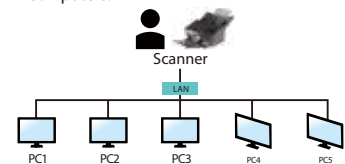
Designed with the innovative reverse roller for advanced paper separation capability, the AD370WN delivers outstanding feeding reliability and operating productivity by effectively reducing the risk of a multi-feed or paper jam.

A Duplex Scanner Suited for Document and Cards

Thanks to the advanced straight paper path and image processing technology, mixed batches of documents with varies sizes and weights can be scanned, appropriately cropped, deskewed, and ready to use. Scan size accepts paper from receipts (50 x 50 mm/2 x 2 in.) to business document (242 x 356 mm/9.5 x 14 in.). The auto document feeder is also robust enough to feed paper up to 413 g/m² (110 lb.) and embossed hard cards such as ID cards, credit cards, driver's license, and health insurance card up to 1.25mm in thickness.

A Wired Network Scanner

After connecting to the LAN through the ethernet cable, install Avison's Network setup tool - Virtual Scanner Link software to find and connect the scanner on the LAN. Then you can start a scan either from your computer directly on the scanner's button. What is best, the network scanner allows you to switch to other computers in the LAN, users in the LAN can really enjoy the scan and collect the image on their own computers!



Convenient Mobile Scanning

Built-in with a Wi-Fi dongle, the AD370WN can work as a wireless device to scan and receive images directly from your mobile devices.

Color, and Graphical LCD Display

The AD370WN is easy to use through the LCD display and buttons on the panel. By selecting your destination and pressing the "Scan" button, the scan can be done and the scanned image can be sent to your specified destination application such as e-mail, printer, or your favorable image-editing software application. Up to nine frequently used scan settings and destinations can be preset for different scanning needs.



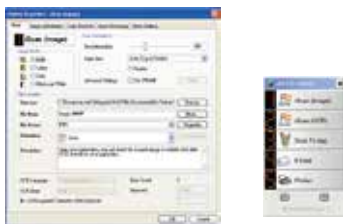
What We Have Bundled

The AD370WN comes with TWAIN and ISIS drivers, and are bundled with a suite of powerful software applications that include Avison Button Manager V2, AVScan X and Nuance PaperPort SE 14, Virtual Scanner Link.

Avision | AD370WN Sheetfed Scanner

Avision's Button Manager V2

-Completes your scan with a single step



The Button Manager V2 main screen

AVScan X

-The Intelligent Document Management Tool



The AVScan X main screen

Nuance PaperPort SE14

- The Professional Choice to Organize and Share Your Documents



The PaperPort SE14 main screen

Button Manager V2 makes it easy for you to scan and send your image to your favorite destinations with a press one button. Now the new version comes with an innovative feature to let you scan and automatically upload the scanned document to popular cloud repositories such as Google Docs, Microsoft SharePoint, or FTP. In addition, the iScan feature allows you to insert the scanned image or recognized text after optional OCR (Optical Character Recognition) process to your text editor such as Microsoft Word to get your job done easily and quickly.

Document Imaging is the very first step of Document Management. However, poor quality images can cause serious problems to later indexing or storing processes. It may increase scanning labor costs and lowers the OCR accuracy. AVScan X ensures all documents are checked and polished at the time they are scanned such that the image quality is guaranteed before they are ready to use for other purposes.

AVScan X is an intelligent scanning and electronic filing solution. AVScan X possesses distinct features that convert and index scanned information into electronic documents for easy storage and fast retrieval.

PaperPort SE 14 is Nuance's most popular scanning and document management solution, carefully designed specifically for home office use. Part traditional file cabinet, part digital-document desktop, PaperPort SE 14 is the fastest and easiest way to scan, share, search and organize your documents. Additionally, PaperPort SE 14 now delivers anytime-anywhere access to your most important files however it's convenient for you - using a PC, Mac, iPhone, iPad, or Android device.



PAPERPORT SE 14



Avison Button Manager V2

AVScan X



Avison AD370WN Product Specifications

| | |
|-------------------------------|---|
| Paper Feeding: | ADF 100-page capacity |
| Scanning Technology: | CIS |
| Light Source: | LED |
| ID card thickness: | Up to 1.25 mm |
| Long Page Mode: | 200 dpi: 6096 mm (240 in.) 300 dpi: 5540 mm (218 in.) 600 dpi: 1500 mm (59 in.) |
| Scanning Size: | Max. 216 x 356 mm (8.5 x 14 in.) (Paper width up to 242 mm (9.5")) Min. 50 x 50 mm (2 x 2 in.) |
| Scanning Speed: | 80 PPM/160 IPM (color, A4,200 dpi) 70 PPM/140 IPM (color, A4,300 dpi) |
| Paper Thickness: | 27 ~ 413 g/m ² (7 to 110 lb.) |
| Optical Resolution: | 600 dpi |
| Output Resolution: | 75, 100, 150, 200, 300, 400, 600 and 1200 dpi |
| Output Formats: | B/W, greyscale, 24-bit color |
| File Formats: | BMP, PNG, GIF, JPEG, PDF, Searchable PDF Multi-Page TIFF, TIFF, RTF, TXT, XPS, DOC, XLS, PPT, DOCX, XLSX, PPTX, HTML. |
| Bundled Software: | Avison Button Manager V2, Avison AVScan X Nuance PaperPort SE 14, Virtual Scanner Link |
| Interface/Drivers: | USB 3.2 Gen 1x1 / TWAIN, ISIS, WIA |
| Network connection: | RJ-45 Ethernet 10/100/1000 Mb, Wi-Fi |
| Wi-Fi standard: | IEEE 802.11b/g/n |
| Power Supply: | Input: 100~240 VAC, 50/60 Hz Output: 24V, 2A |
| Power Consumption: | Operation: 35W Sleep: 2.15 W Ready: 9.0W Off: 0.2W |
| Environmental Factors: | Operating temperature: 10°C to 35°C (50°F to 95°F) Operating humidity: 10% to 85% |
| Acoustic Noise: | Ready: <25 dB Operating: <52 dB |
| Dimensions (W x D x H): | Max.: 316 x 680 x 239 mm (12.4 x 26.8 x 9.4 in.) Min.: 316 x 191 x 168 mm (12.4 x 7.5 x 6.6 in.) |
| Weight: | 4.7 kg (10.3 lb.) |
| Recommended Daily Duty Cycle: | 15,000 Sheets |
| Multi-feed Detection: | Ultrasonic Sensor |

Specifications subject to change without notice.

We have endeavored to ensure that the information in this manual is accurate and that Avison is not responsible for printing or typographical errors. The above configuration is for reference only. The product description, Avison, Inc. All rights reserved. Other company and product names mentioned in this document are trademarks of their respective companies. Wherein the third party product is for reference only and Avison does not warrant these products nor is responsible for the efficiency or use of these products.

System Requirements

| | |
|---------------------------|--|
| CPU: | Intel Core i3 (2.1GHz) or Higher |
| Memory: | 2GB (32bit Windows) 4GB (64bit Windows) |
| DVD-ROM: | DVD ROM Drive |
| USB: | USB 3.2 Gen 1x1 |
| Windows Operating System: | Windows 10, 8.x, 7, Vista, SP3, XP (32 & 64 bit) |

Contents

| |
|-------------------------------------|
| Scanner |
| Power Supply |
| Quick Guide |
| USB 3.2 Gen 1x1 Cable |
| CD-ROM includes: |
| -Scanner Driver (TWAIN/ISIS Driver) |
| -Avison Button Manager V2 |
| -Avison AVScan X |
| -Nuance PaperPort SE 14 |
| -Virtual Scanner Link |



Avison
www.avision.com