

The freedom to work
with information the
way you want



A hybrid solution to break free from the limitations of paper

With the right scanning solution for your organisation, you can scan, share, save and secure the data in your business more easily and efficiently than ever before.

The new Panasonic KV-SL30 Series of scanners offers you precisely that solution.

Faster, more flexible, with greater functionality and offering more budget-friendly value than its rivals, it represents greater return on your investment and lower cost of ownership for you.

The real strength of the series lies in its hybrid design. Typically, a business like yours would need an automatic document feeder (ADF) scanner to process high volumes of standard-format documents, and a flatbed model for damaged or unusual formats, and booklets. So you would need multiple machines – meaning increased costs and slower scanning processes.

Where flatbed meets ADF

The KV-SL30X6 Series overcomes the need for purchasing two separate machines. In both models in the series, the flatbed is integrated with an ADF scanner, meaning they can handle damaged documents, booklets, passports, ID cards, envelope and mixed-size documents easily.

So if you're looking for a scanning solution designed specifically for the challenges of large organisations such as yours, the answer is right here.

Two high-speed scanning formats in two high-performing models



Automatic document feeder

- Ideal for scanning large document batches
- Paper-feeding capacity of up to 100 originals (80g/m2)
- Double-sided scanning



Flatbed

- High-speed scanning at 1.5 seconds
- Ideal for stapled, fragile and thin paper documents, and bound books
- Easy-to-access lightweight flatbed cover

High-speed scanning for big-business benefits

Faster scanning is more efficient, more cost-effective scanning. The KV-SL30 Series delivers it in abundance

Panasonic worked to speed up the scanning time of the flatbed, reducing it by half compared to the conventional machine (KV-SS081). Additionally, the KV-SL3066 scans at 65ppm/130ipm and the KV-SL3056 scans 45pp/90ipm, making them the fastest of all Panasonic models in the same class. Equally, in terms of flatbed scanning, the KV-SL3066 and KV-SL3056 are just as high-performing. Both can scan at 1.5 seconds, meaning you can quickly digitize notebooks, and thin and damaged documents.



KV-SL3066/KV-SL3056

Simplex

Duplex

300 dpi binary	65 ppm/45 ppm	130 ipm/90 ipm
300 dpi colour	65 ppm/45 ppm	130 ipm/90 ipm

Multiple document scanning

Through the ADF

- Passports, multipage documents and bankbooks
- Mixed paper and strong card batch scanning
- Up to three embossed cards at once
- Long paper formats, such as EKG documents

Through the flatbed

- Damaged documents
- Booklets
- Cards, such as business cards

Easy continuous scanning via ADF and flatbed

Depending on the documents, you can choose to scan your documents from either the ADF or flatbed – or both. You can also opt for continuous scanning from both, changing the scanning order from one to the other in a single operation, saved as a single file.

Rich functionality for flexible scanning

Background colour switching

You can easily switch between a black or white background colour for the scanned image. With a white background selected on the ADF, you can use the auto-cropping and de-skewing functions, or remove the background altogether.

Page-splitting function

Ideal for scanning booklets or brochures, you can centre your documents on the flatbed and the scanner will split the whole scanned image into separate pages.

Multi-crop

For increased productivity, and eliminate the need for numerous scans, you can place multiple documents of different sizes on the flatbed and single scan will automatically crop all documents to their correct sizes.

Auto start

In manual mode, you can start scanning can be started by simply opening and closing the flatbed cover, without needing to press the start button or operate the scanner via PC.

Single-touch scanning

You can set and recall previous settings with a single press of a button.

Double feed skip (DFS)

Should the scanning operation stop due to a double-feed being detected, you can simply press the DFS key to ignore the error and continue scanning. This is useful for applications where documents may contain a label, sticky notes or envelopes.

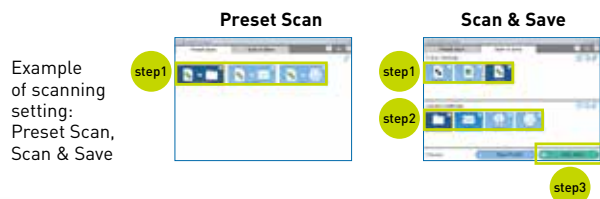
Auto preview/rescan

Auto Preview automatically adjusts scanned data, produces nine candidate types, and shows them in a list format. You can select the most suitable image with a single click, and make further adjustments if desired.

Similarly, when the scanned image is poor, you can adjust the image on a PC screen without rescanning the original document using Auto Rescan. This saves both time and trouble.

ICP Express (Image Capture Plus Express)

A software with intuitive operation, and simple, easy-to-understand GUI makes changing settings and use simplified.



Ready to learn more about the
KV-SL30 Series Scanners?

For full details visit
business.panasonic.co.uk/A4-scanners

Call **+44 (0) 2070226530**

Panasonic System Communications Company Europe (PSCEU)
Panasonic House, Willoughby Road
Bracknell, Berkshire RG12 8FP
United Kingdom

Phone : +44 (0)207 022 6530